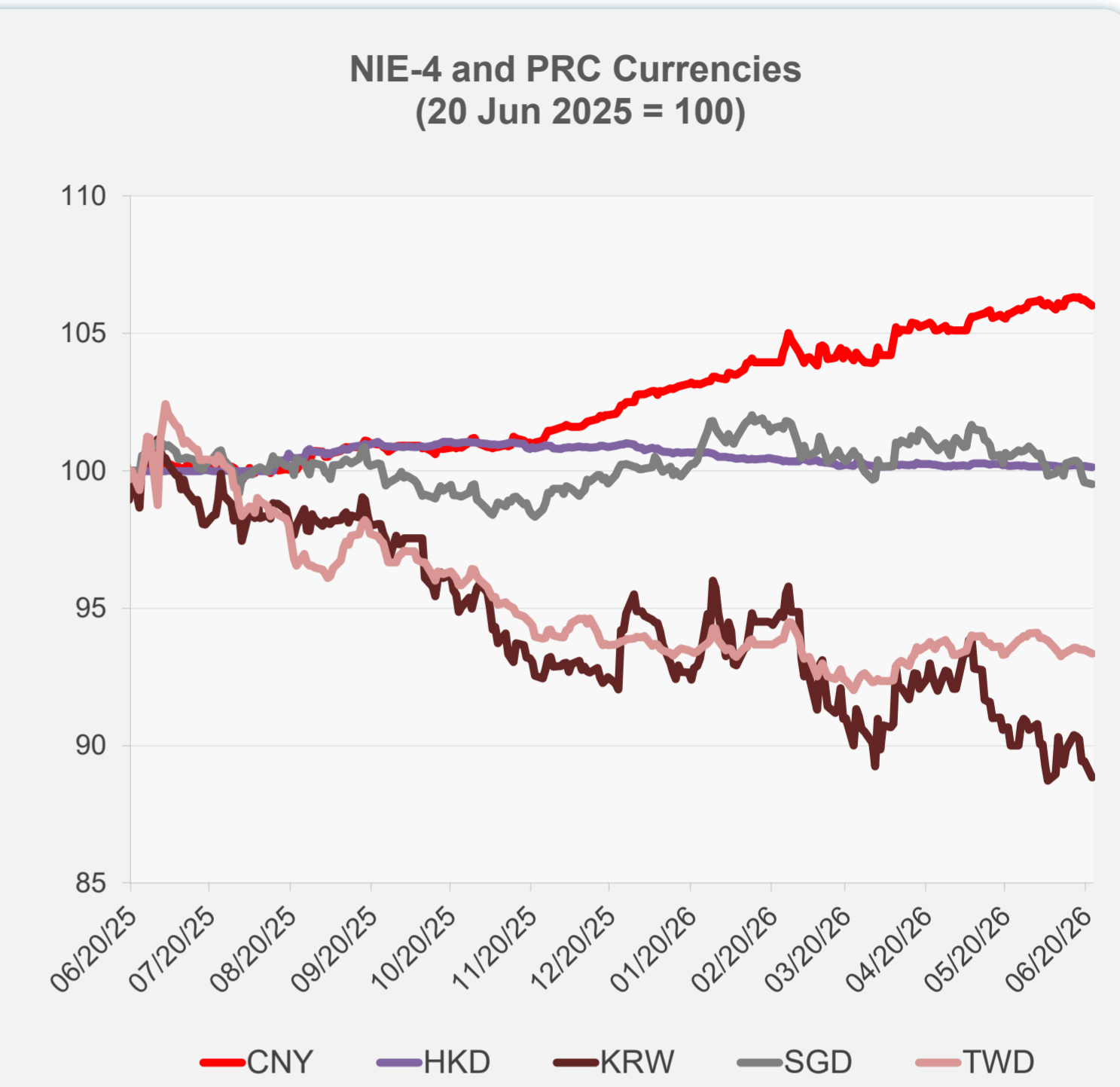
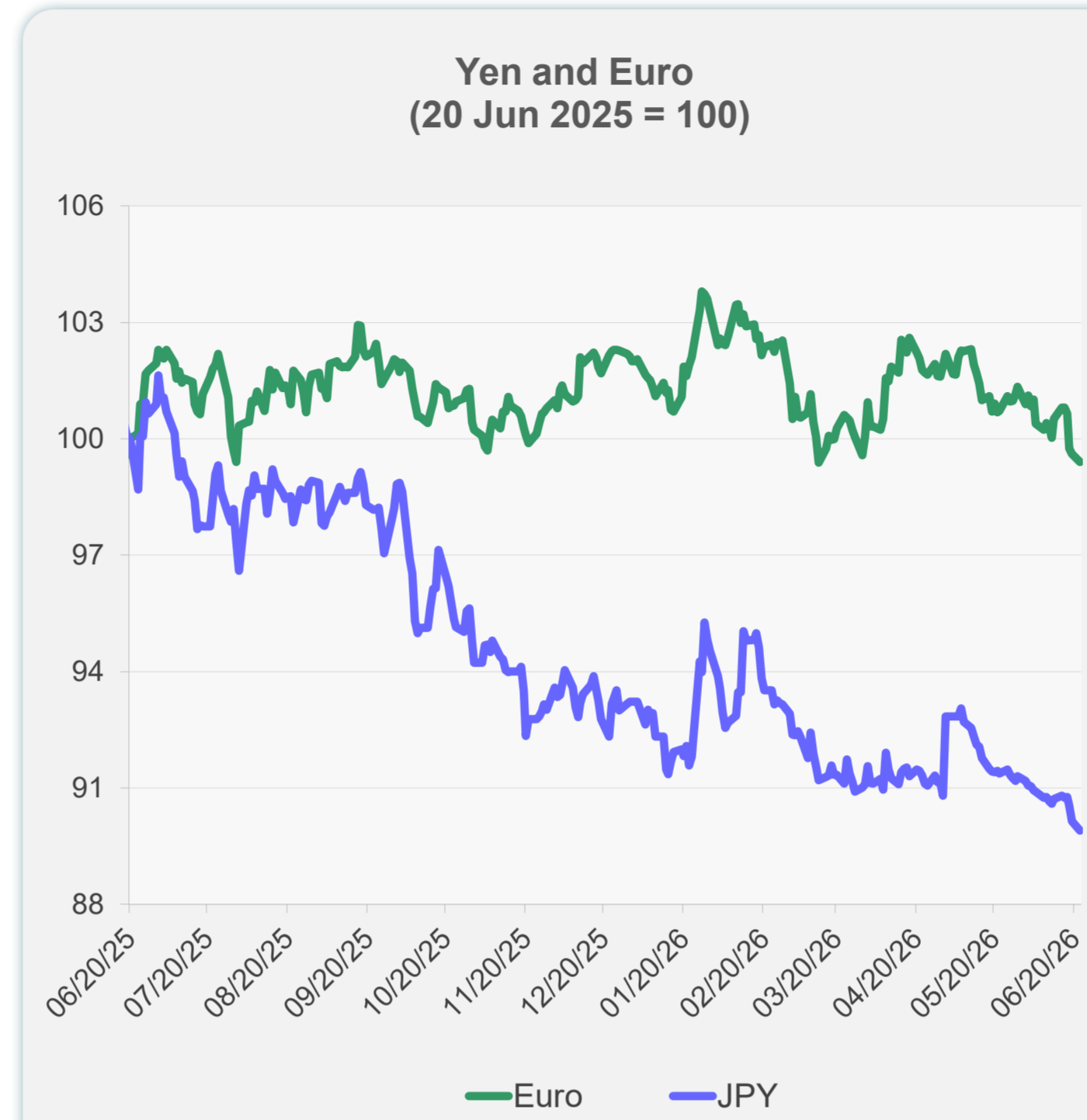
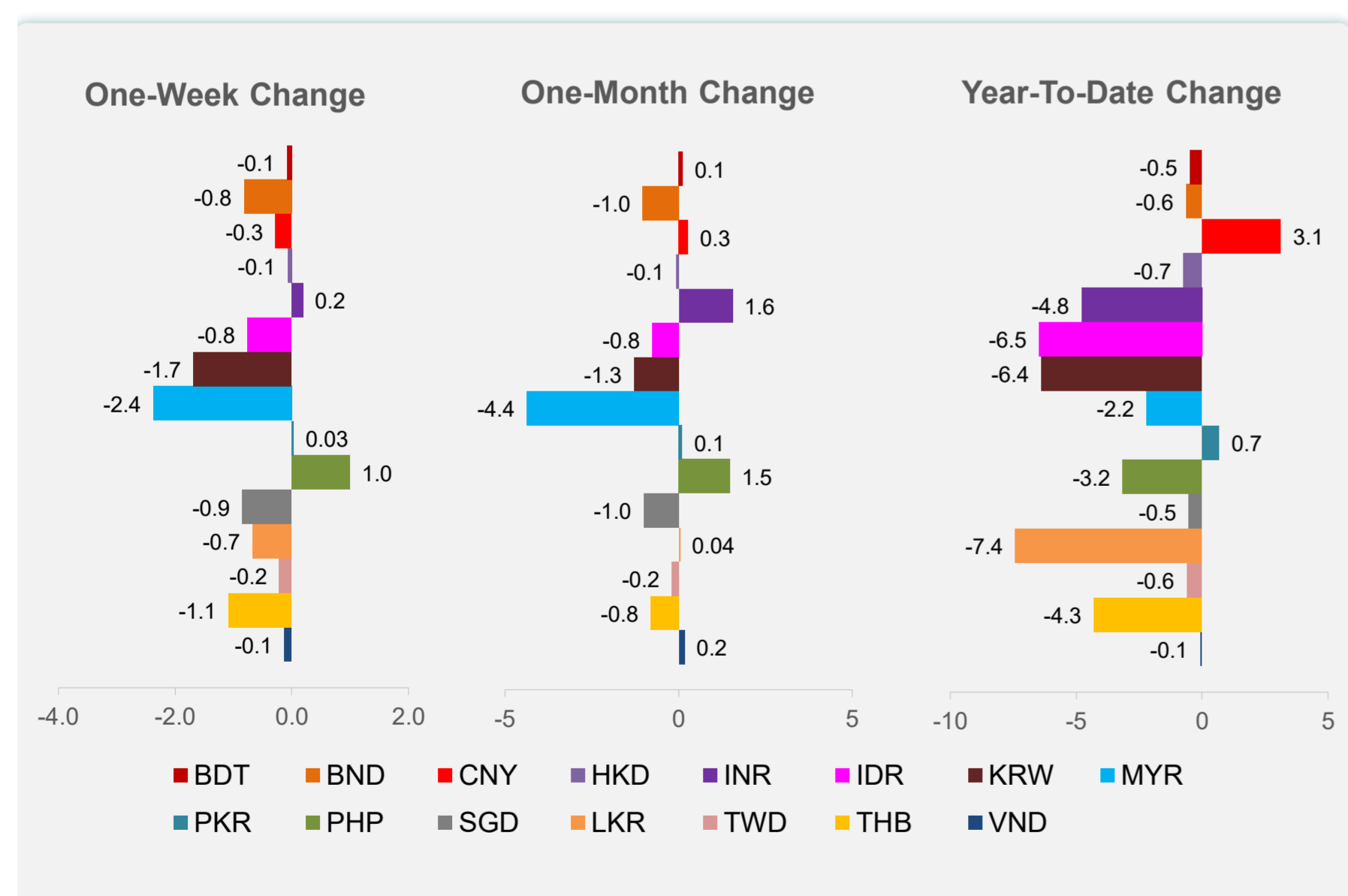
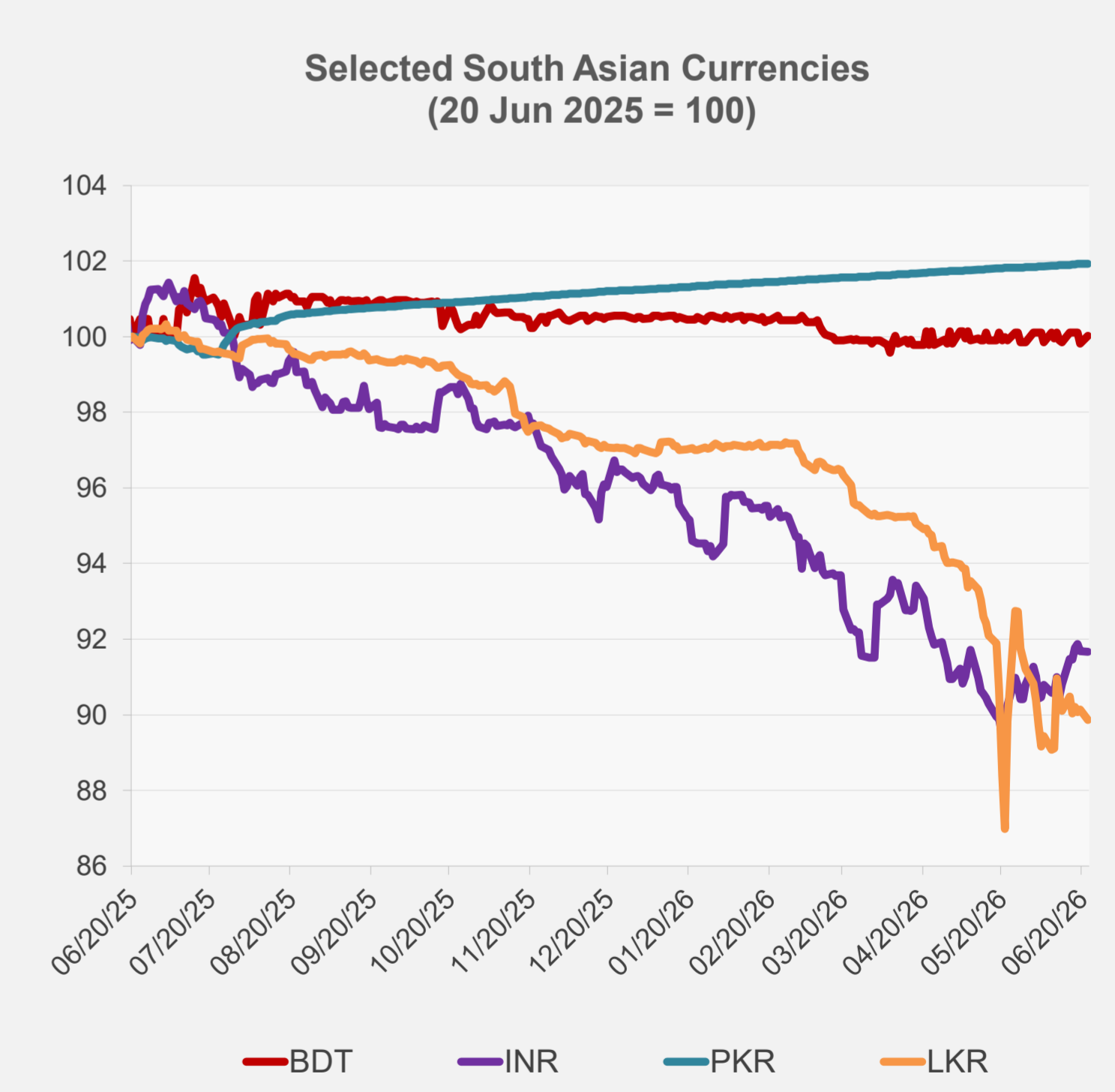
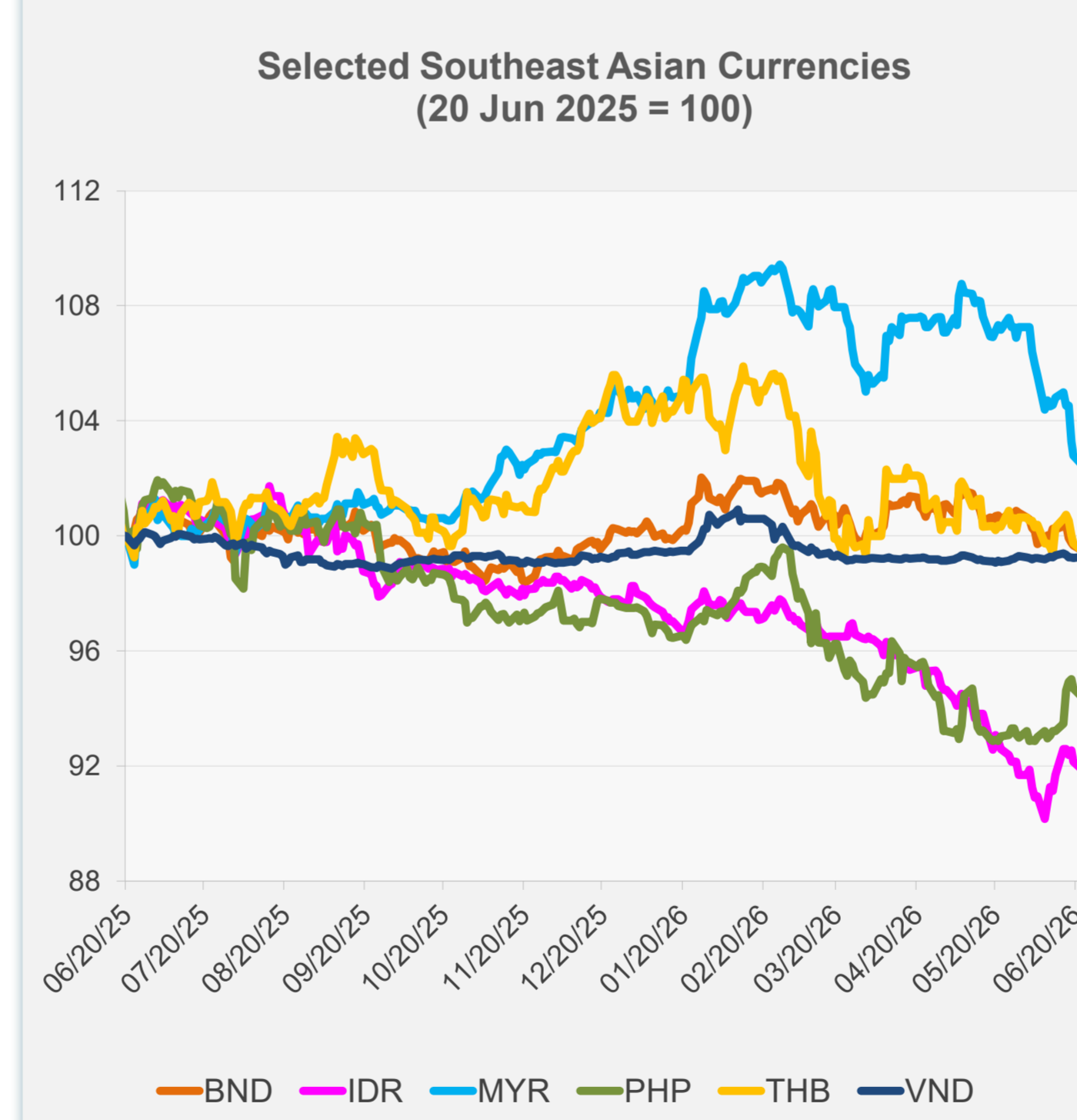


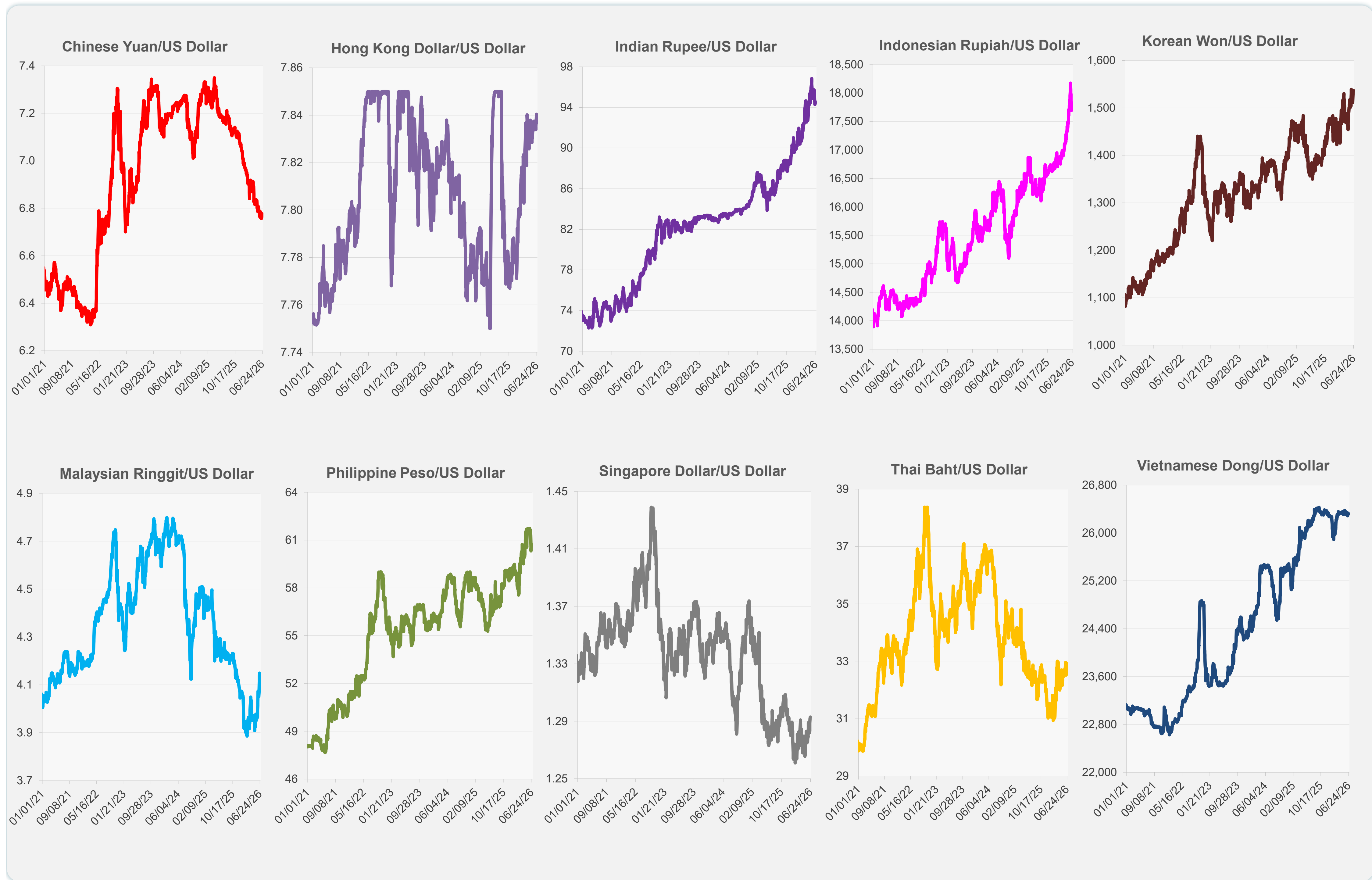
	Latest Closing	% change from Previous Day	% change from 01-Jan-26
Euro	0.87	-0.21	-2.55
Japanese yen (JPY)	161.74	-0.26	-3.56
Bangladeshi taka (BDT)	122.85	0.20	-0.49
Brunei dollar (BND)	1.29	-0.16	-0.64
Chinese yuan (CNY)	6.78	-0.21	3.13
Hong Kong dollar (HKD)	7.84	-0.05	-0.73
Indian rupee (INR)	94.49	-0.02	-4.78
Indonesian rupiah (IDR)	17,830.00	-0.28	-6.48
Korean won (KRW)	1,537.00	-0.65	-6.38
Malaysian ringgit (MYR)	4.15	-0.29	-2.19
Pakistan rupee (PKR)	278.21	0.01	0.68
Philippine peso (PHP)	60.72	-0.30	-3.15
Singapore dollar (SGD)	1.29	-0.07	-0.53
Sri Lanka rupee (LKR)	334.38	-0.30	-7.41
Taipei,China NT dollar (TWD)	31.63	-0.14	-0.61
Thai baht (THB)	32.92	-0.24	-4.30
Vietnamese dong (VND)	26,320.00	0.04	-0.08



NIE = Newly Industrialized Economies



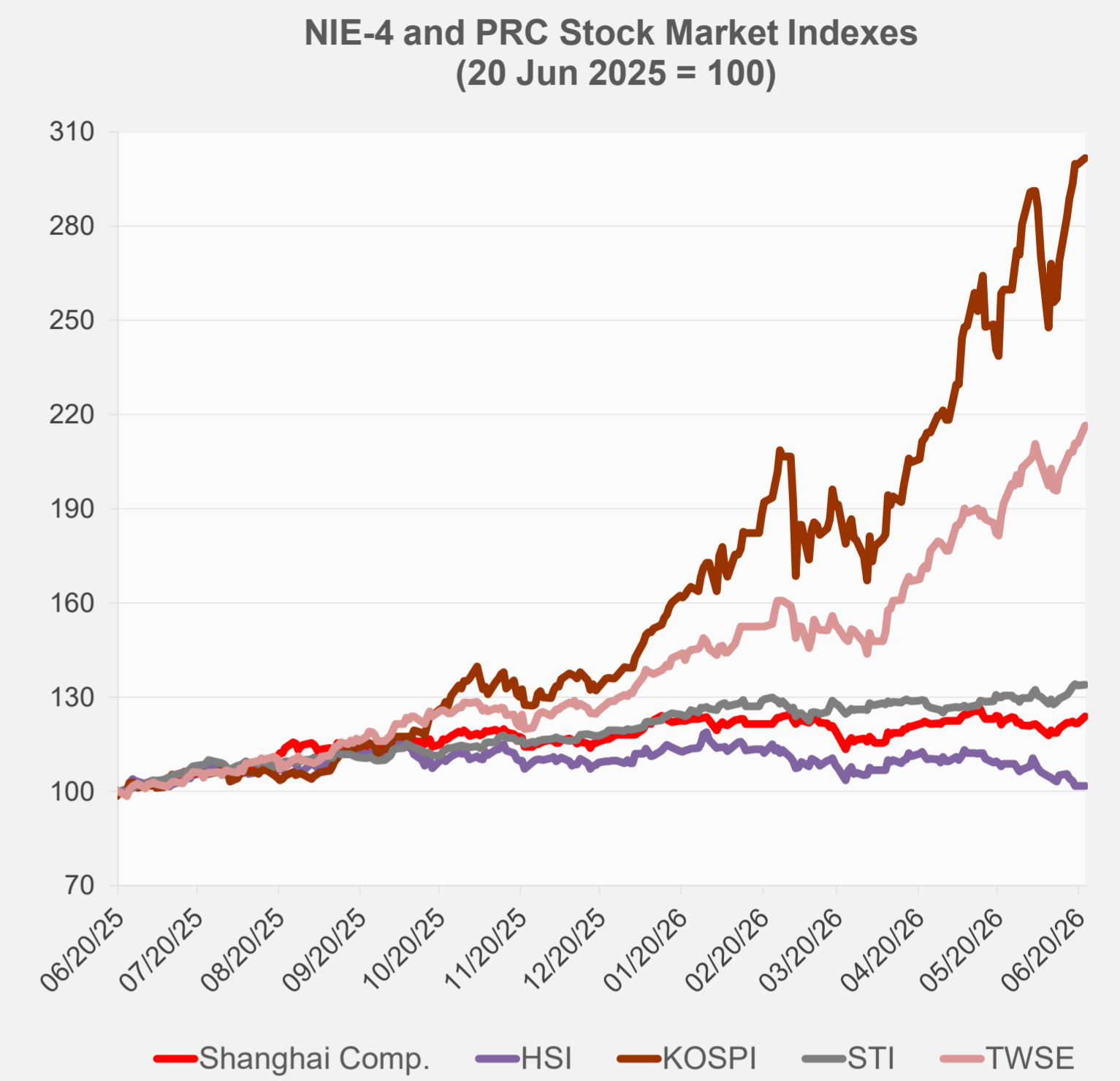
Note: Negative/Decreasing values indicate depreciation of local currency, and positive/increasing values indicate appreciation.
Source: ADB calculations using data from Bloomberg and Haver Analytics.



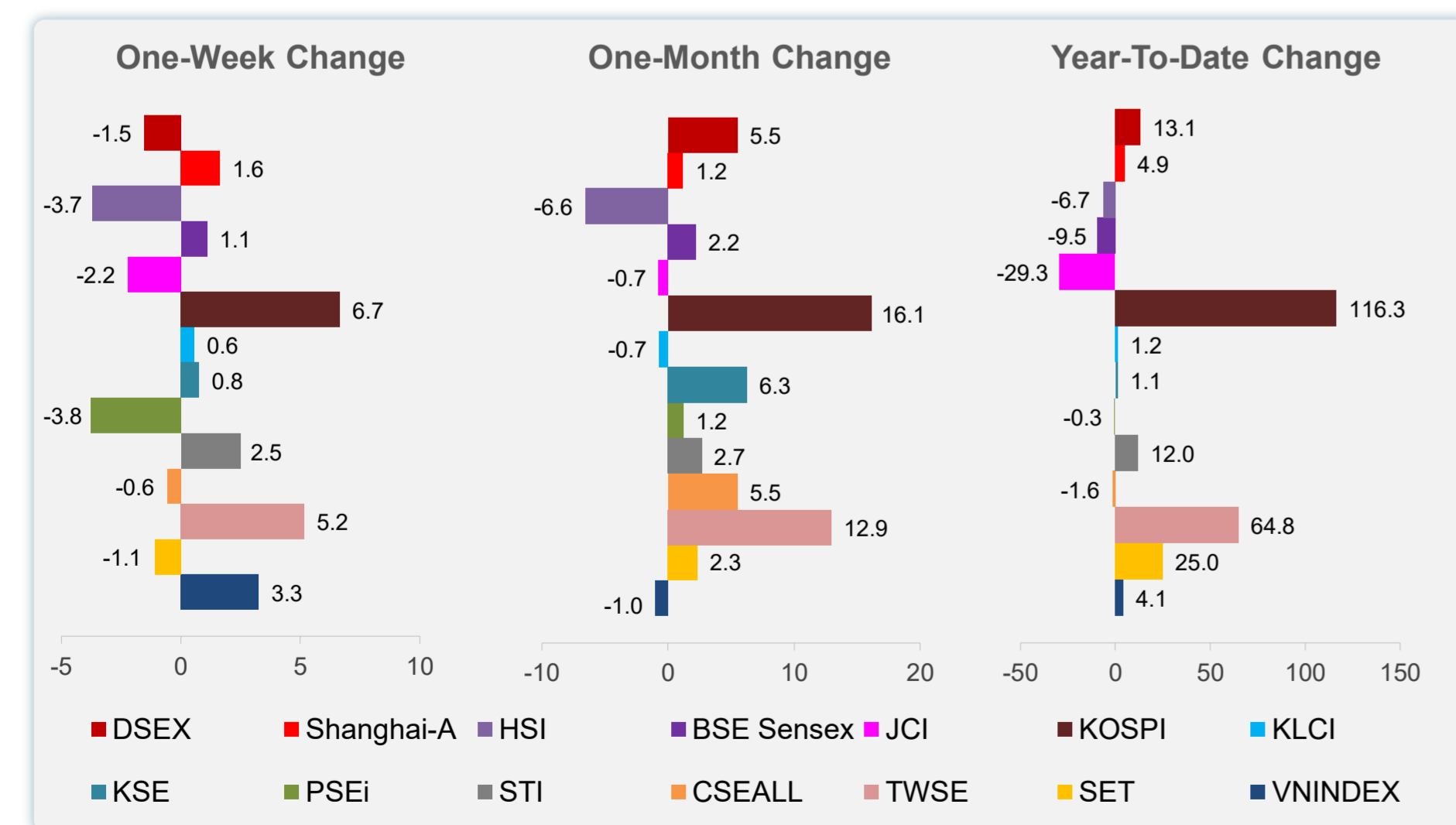
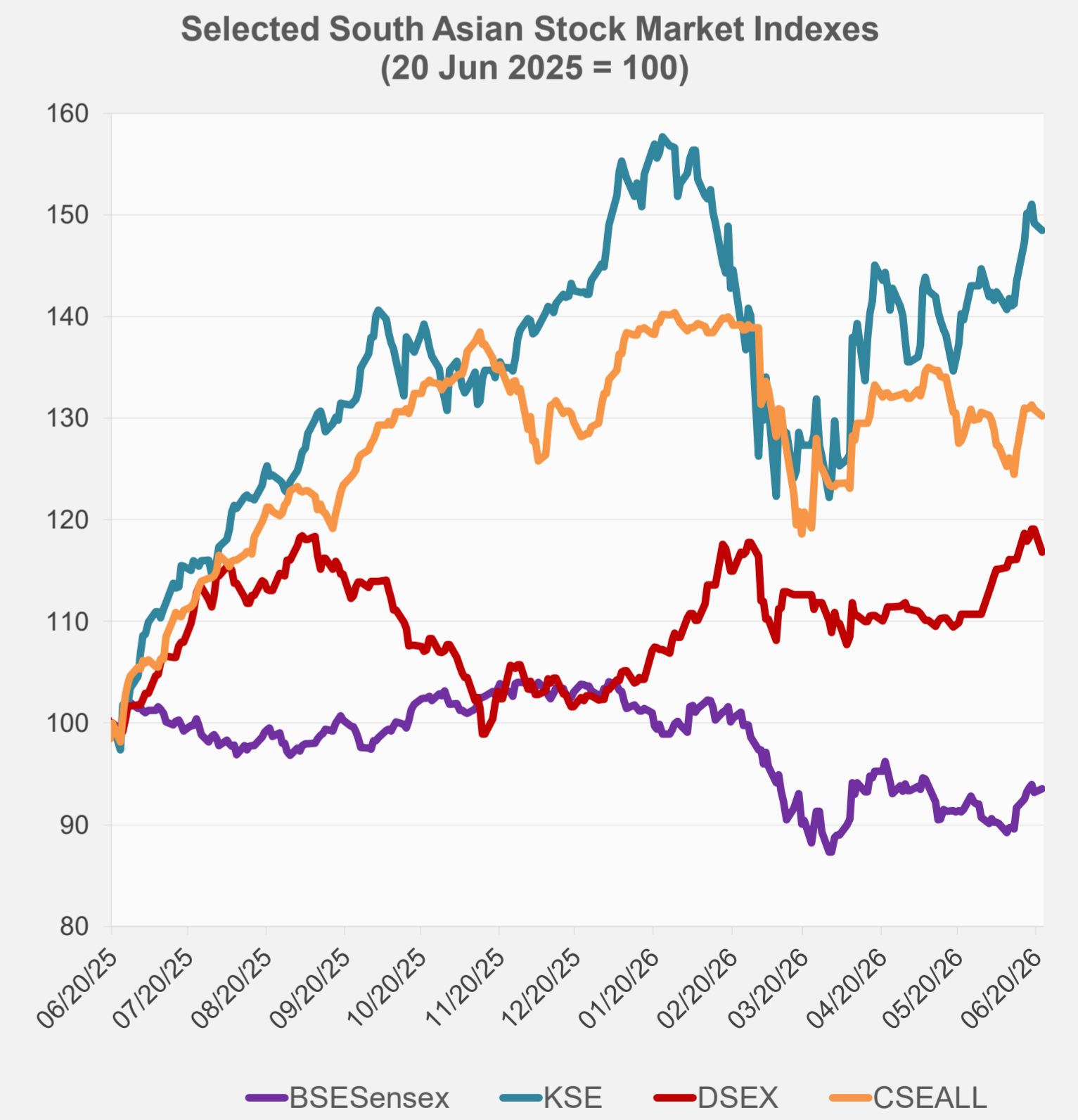
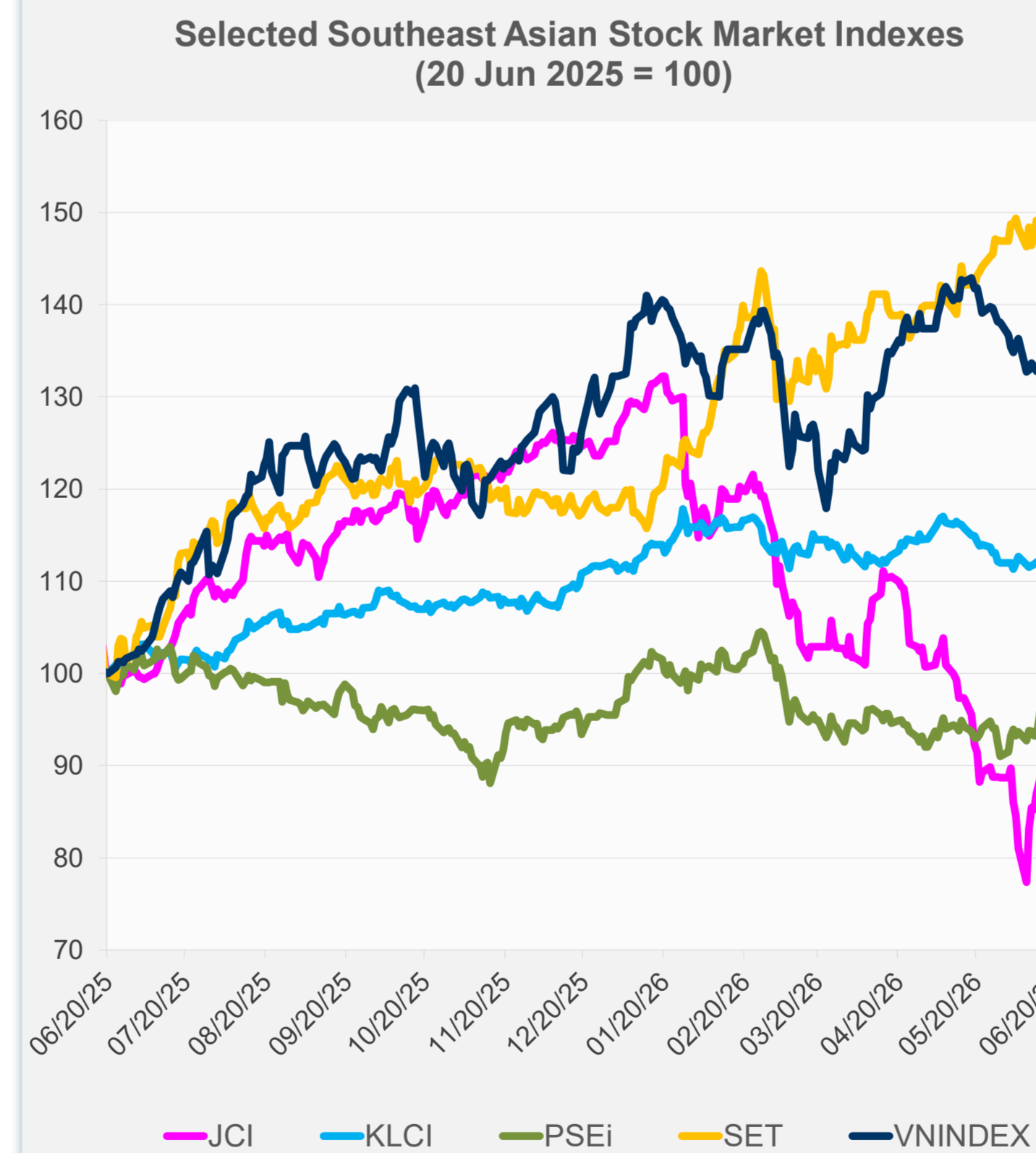
Source: Haver Analytics.

Daily Market Watch
STOCK INDEXES

	Latest Closing	% change from Previous Day	% change from 01-Jan-26
US Dow Jones Ind Avg	51,712.71	0.29	7.59
US NASDAQ	26,166.60	-1.32	12.58
US S&P 500	7,472.79	-0.37	9.16
UK FTSE 100	14,729.65	-0.03	30.80
EURO STOXX 50	6,311.32	0.29	8.98
Japan NIKKEI 225	72,353.96	1.55	43.73
Bangladesh DSEX	5,554.18	-1.89	13.11
PRC Shanghai Comp.	4,163.10	1.78	4.89
Hong Kong, China HSI	23,924.81	0.00	-6.66
India BSE Sensex	77,094.07	0.38	-9.50
Indonesia JCI	6,116.69	-0.98	-29.26
Korea, Rep. of KOSPI	9,114.55	0.69	116.28
Malaysia KLCI	1,700.84	-0.65	1.23
Pakistan KSE 100	178,468.50	-0.48	1.13
Philippines PSEi	6,035.02	-1.64	-0.30
Singapore STI	5,204.01	0.22	12.01
Sri Lanka CSEALL	22,253.52	-0.48	-1.64
Taipei, China TWSE	47,741.51	2.75	64.83
Thailand SET	1,574.13	0.10	24.96
Viet Nam VNINDEX	1,857.91	1.83	4.11



NIE = Newly Industrialized Economies



Sources: ADB calculations using data from Bloomberg and CEIC Data Company.

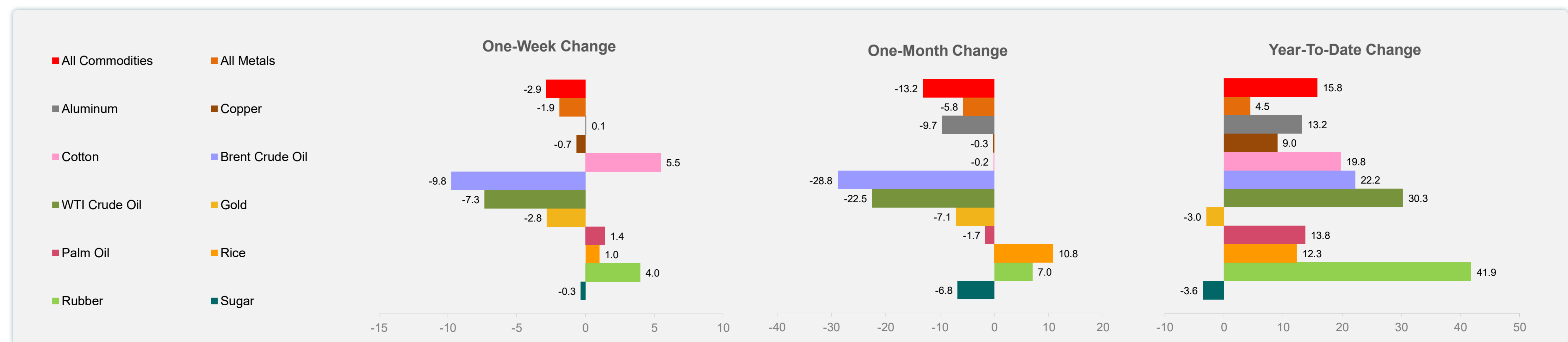
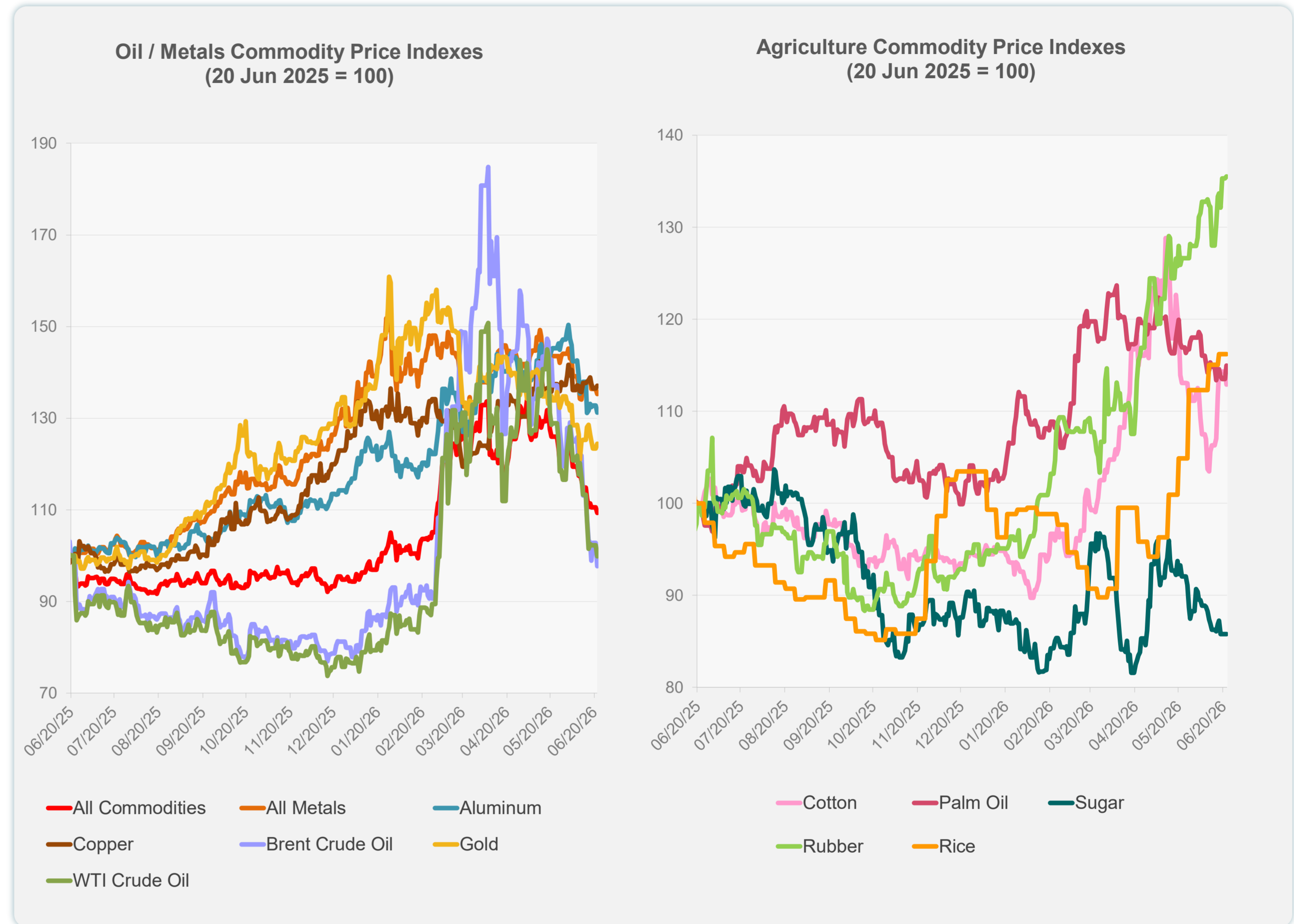


Sources: ADB calculations using data from Bloomberg and CEIC Data Company.

Daily Market Watch
COMMODITY PRICES

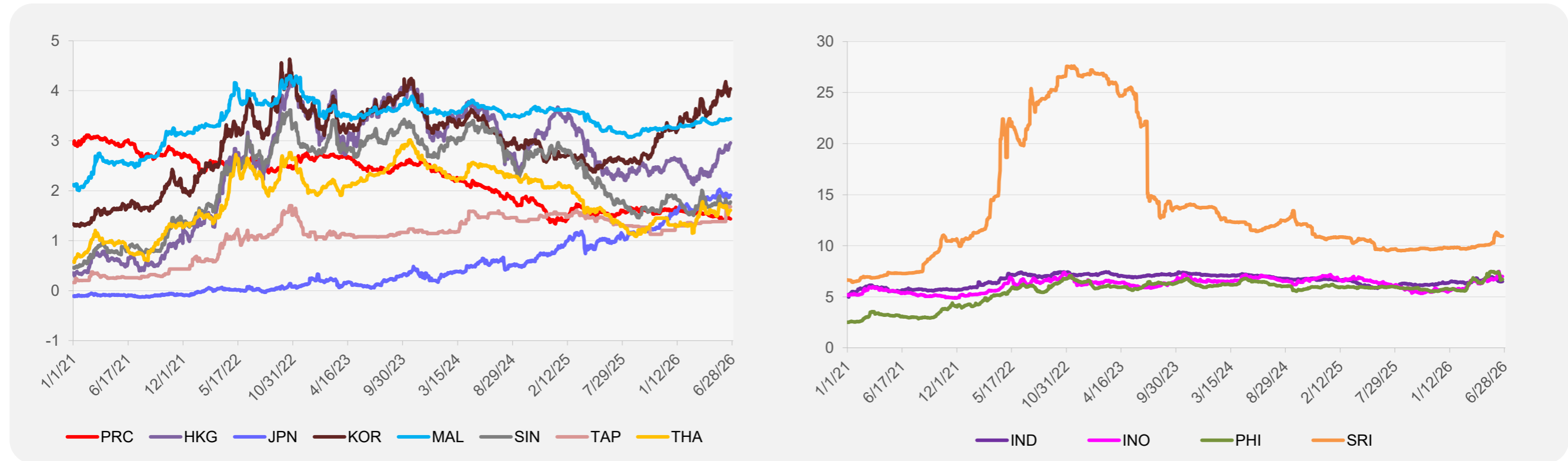
	Unit	Latest Closing	% change from Previous Day	% change from 01-Jan-26
S&P All Commodities	US\$	635.25	-1.08	15.81
S&P All Metals	US\$	463.54	-0.80	4.46
Aluminum	US\$/metric ton	3,360.54	-1.17	13.23
Copper	US\$/metric ton	13,580.37	0.40	9.05
Cotton	US cents/lb	74.29	-1.26	19.78
Brent Crude Oil	US\$/barrel	76.33	-5.00	22.23
WTI Crude Oil	US\$/barrel	74.82	-2.32	30.30
Gold	US\$/troy oz	4,190.06	0.83	-2.99
Palm Oil	US\$/metric tonne	1,101.94	1.29	13.76
Rice ¹	US\$/metric ton	501.00	0.00	12.33
Rubber ²	US\$/kg	305.00	0.16	41.86
Sugar	US cents/lb	14.26	0.00	-3.58

¹ Latest closing price from 17 June 2026.
² Singapore Exchange, Ribbed Smoked Sheet Rubber.

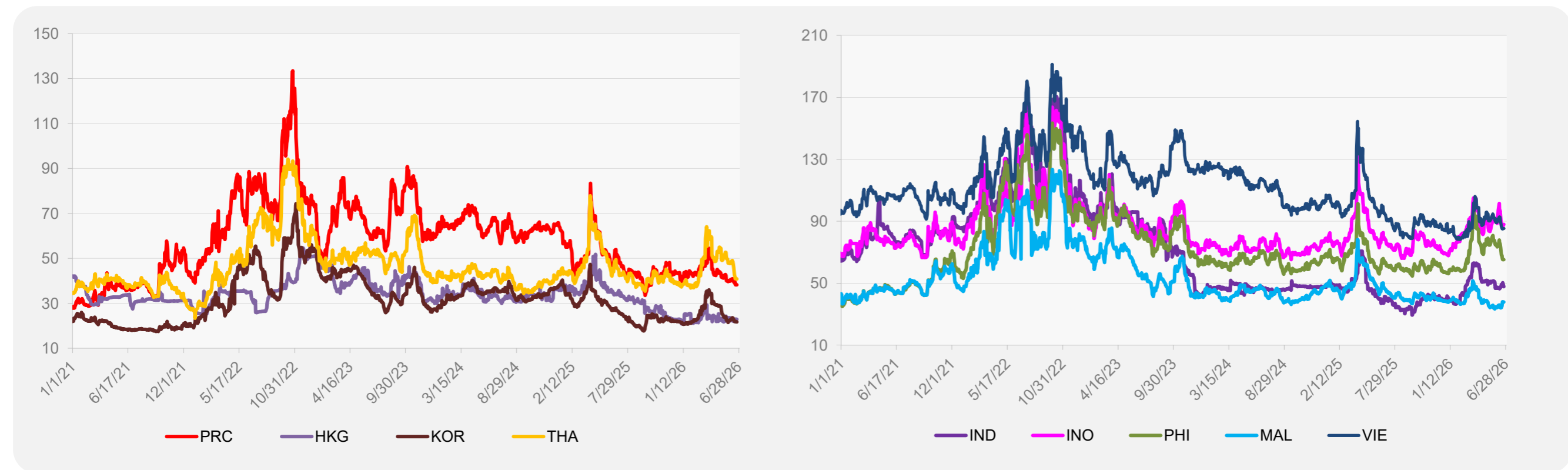


Source: ADB calculations using data from Bloomberg.

5-YEAR LOCAL CURRENCY GOVERNMENT BOND YIELDS (%)



5-YEAR CREDIT DEFAULT SWAP¹



¹ In USD and based on sovereign bonds.
Source: ADB calculations using data from Bloomberg.